

Fig. 23. *Mytilocypris henricae*, outside of left valve and inside of right valve, as in Fig. 16: *A, B*, female, L. Linlithgow, Vic.; *C, D*, male, L. Linlithgow; *E, F*, female, pond 1.5 km SE. of White Lake, Vic.; *G, H*, male, same locality; *I, J*, female, L. Purdigulac, Vic.; *K, L*, male, L. Purdigulac (valves slightly shrunken from having been originally kept in formalin). Recent species.

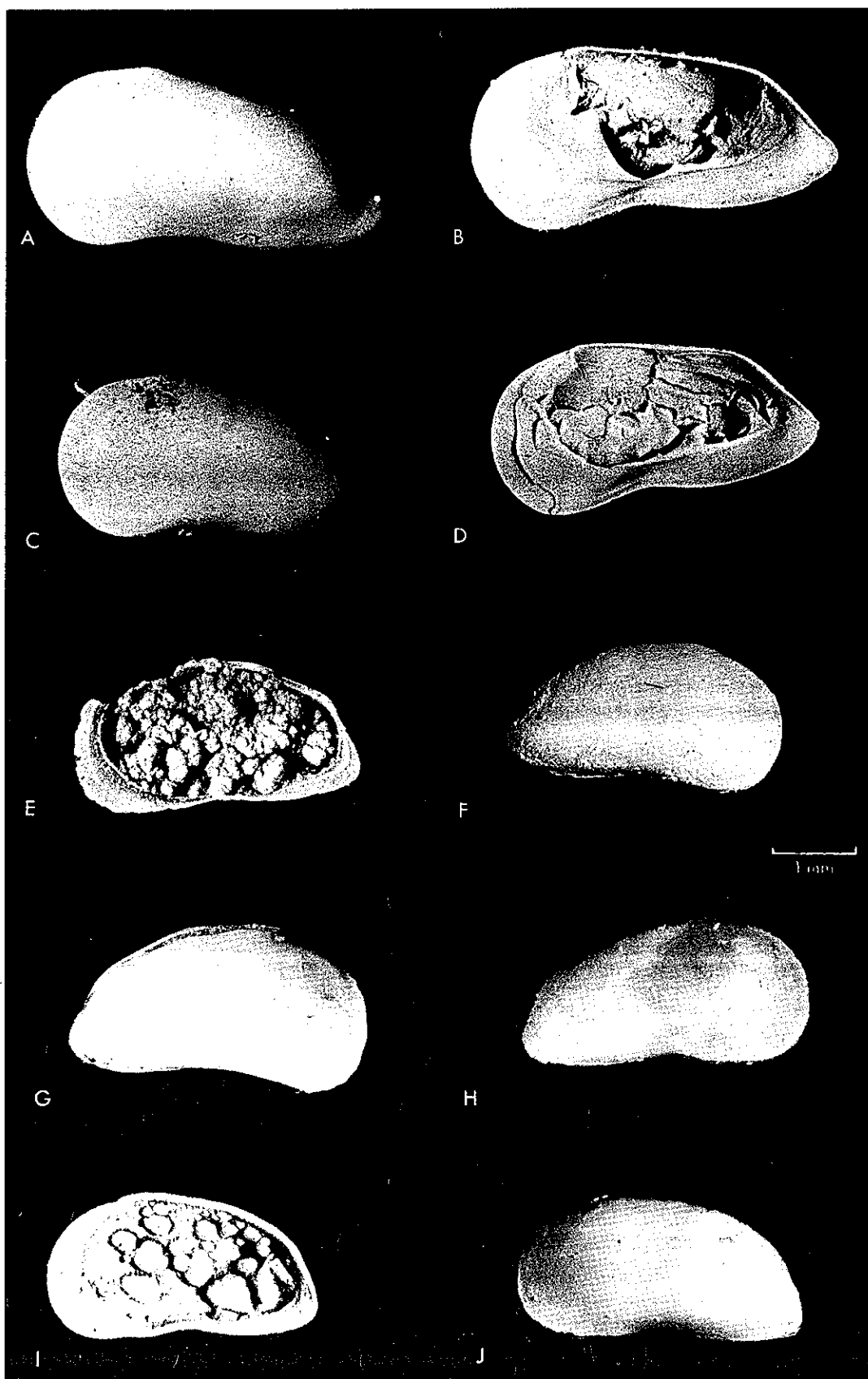


Fig. 24. *Mytilocypris* spp. A–D, *M. splendida*, outside of left valve and inside of right valve, as in Fig. 16: A, B, female, Tunbridge Salt Works, Tas.; C, D, male, Tunbridge Salt Works; Recent species. E–J, *M. praenuncia*, fossil (? Tertiary), L. Keilambete, Vic.: E, male, right valve, inside; F, female, right valve, outside; G, female, right valve, outside; H, male, right valve, outside; I, female, right valve, inside; J, male, left valve, outside.

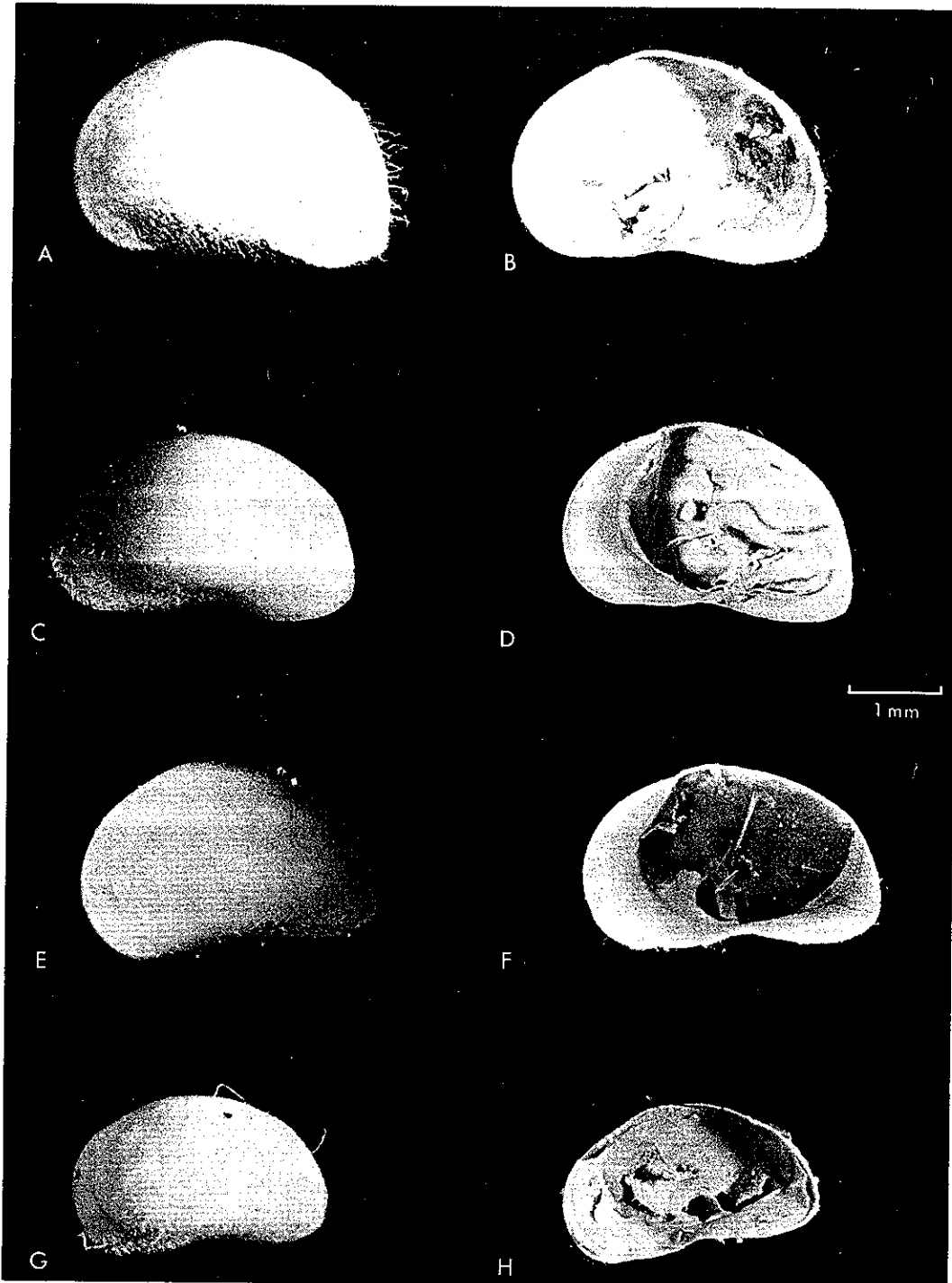


Fig. 25. *Trigonocypris globulosa*, outside of left valve and inside of right valve, as in Fig. 16: *A, B*, holotype female, L. Buchanan, Qld; *C, D*, paratype male, L. Buchanan; *E, F*, female, Tunbridge Salt Works, Tas.; *G, H*, male, Tunbridge Salt Works. Recent species.

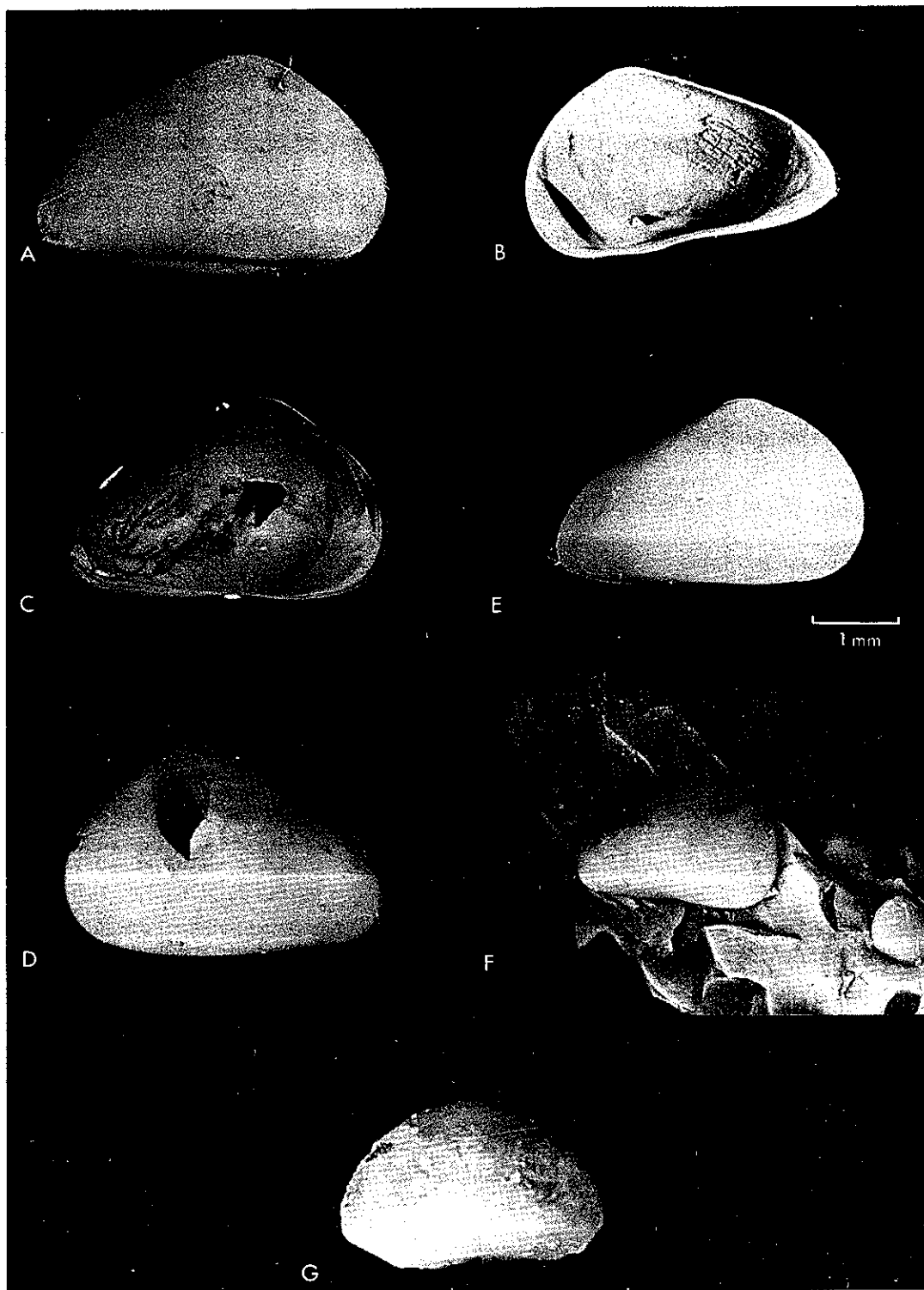


Fig. 26. *Trigonocypris* spp. A–E, *T. timmsi*, Pine Tree Creek Lagoon, via Hughenden, Qld: A, adult female, outside right valve; B, last-stage immature male, inside right valve; C, D, adult male, inside and outside left valve; E, juvenile male, outside right valve; Recent species. F, G, *Trigonocypris* sp., central Queensland: F, immature, outside right valve; G, last-stage immature, outside left valve; fossil, Tertiary.

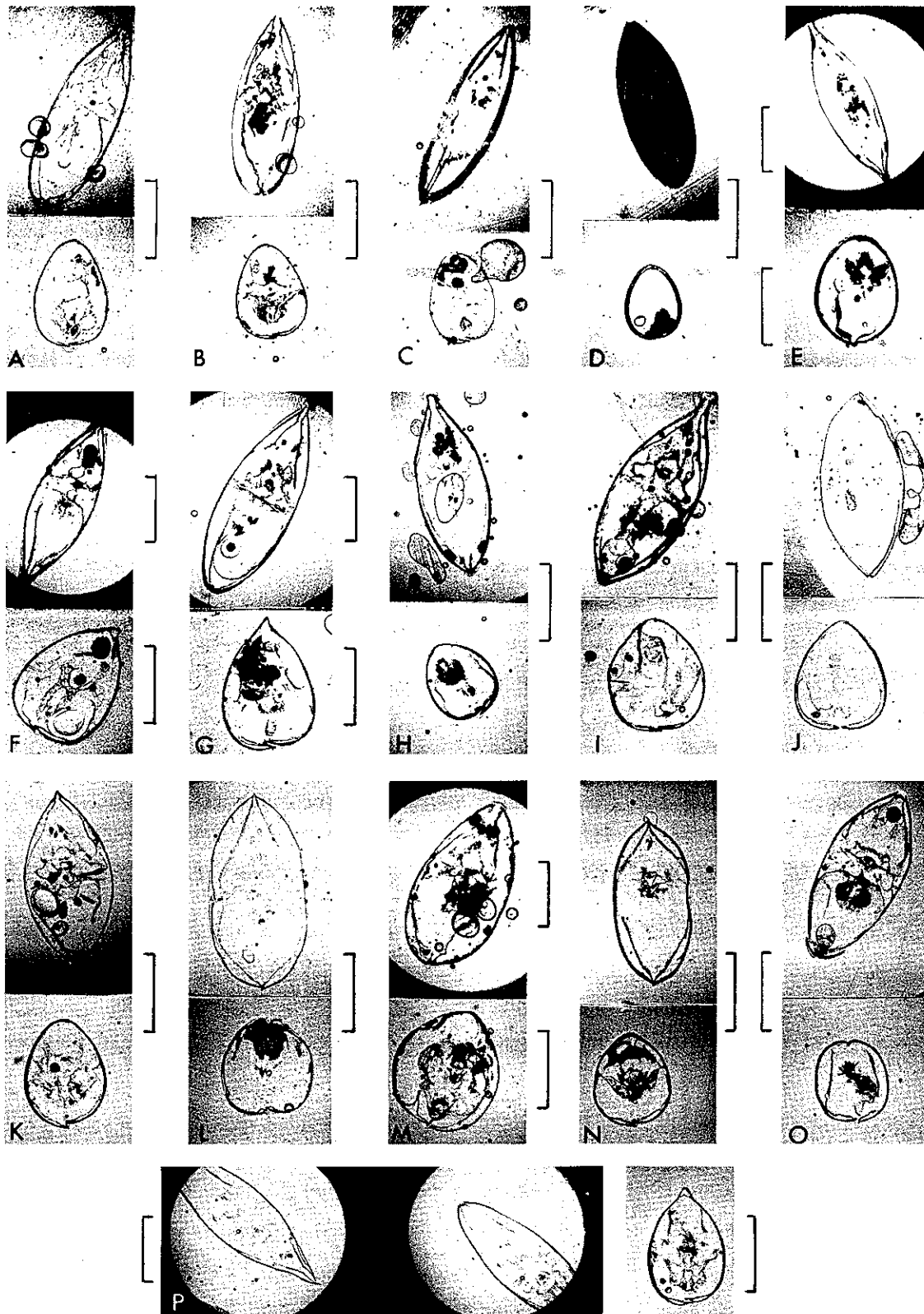


Fig. 27. Longitudinal (upper in each pair) and transverse (lower in each pair) sections of mytilocyprinid spp.: *A*, *Mytilocypris tasmanica*, Calverts Lagoon, Tas.; *B-D*, *M. praenuncia*: *B*, L. Coradgill, Vic.; *C*, L. Bookar, Vic.; *D*, L. Keilambete, Vic.; *E*, *M. splendida*, L. Learmonth, Vic.; *F, G*, *M. henricae*: *F*, L. Linlithgow, Vic.; *G*, pond 1.5 km E. of L. White, Vic.; *H*, *M. minuta*, paratype, the Coorong, S.A.; *I*, *M. ambiguosa*, paratype, pond near Goldsmith, Vic.; *J*, *Trigonocypris timmsi*, Pine Tree Lagoon, via Hughenden, Qld; *K*, *T. globulosa*, paratype, L. Buchanan, Qld; *L, M*, *Australocypris robusta*: *L*, L. Keilambete, Vic.; *M*, Tunbridge Salt Works, Tas.; *N*, *A. hypersalina*, L. Robe, S.A.; *O*, *A. insularis*, Birida (locality 21), W.A.; *P*, *M. mytiloides*, L. Edward, S.A. All specimens are Recent except *D*, which is fossil ?Tertiary. All scale lines represent 2 mm.

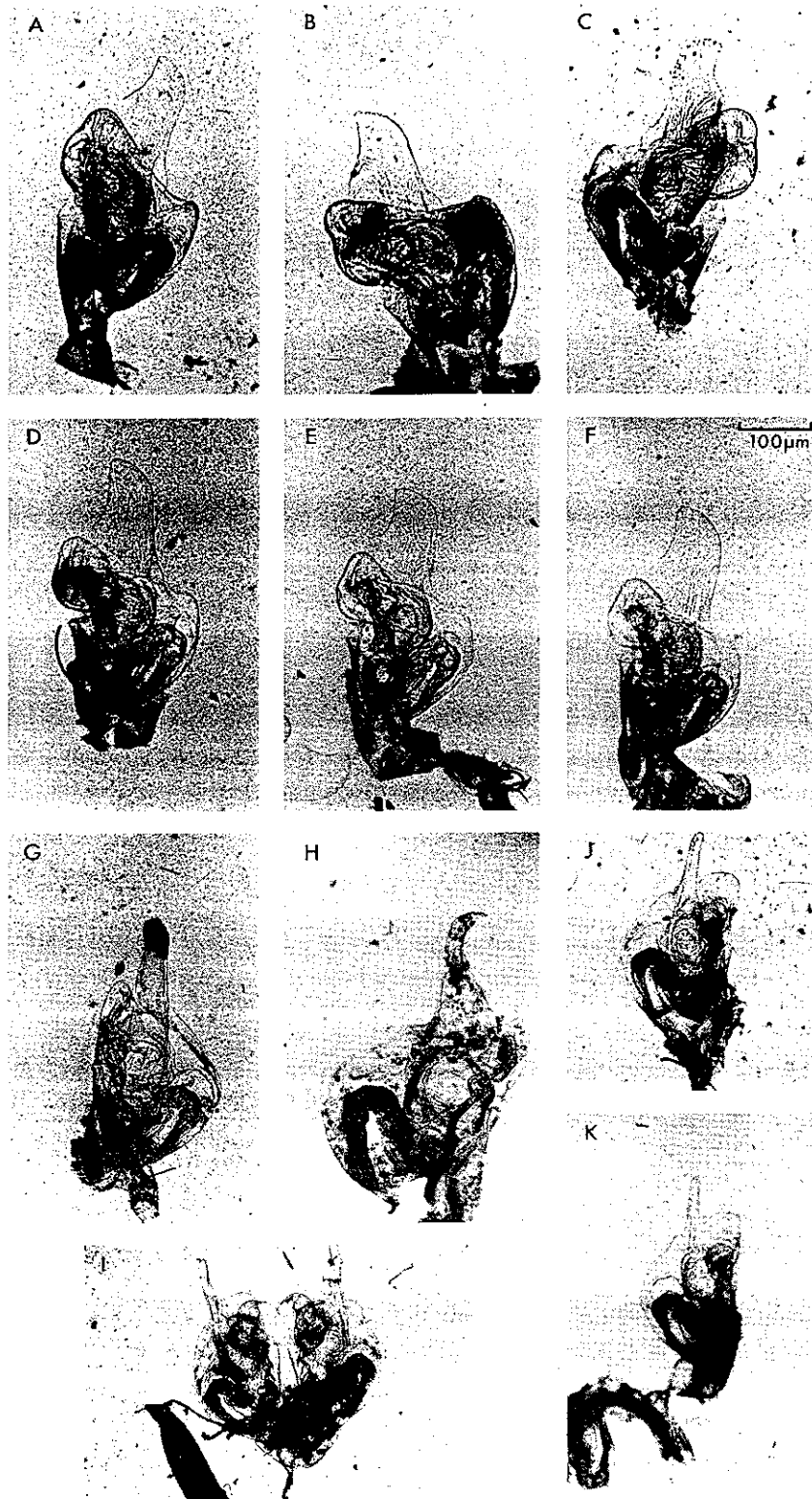


Fig. 28. Hemipenes of mytilocyprinid spp., by transmitted light: *A–C*, *Australocypris hyper-salina*: *A*, L. Robe, S.A.; *B*, Mitre Lake, Vic.; *C*, pond 2 km E. of Langhorne Creek, near saltworks, S.A.; *D–F*, *A. insularis*, Birida, W.A.: *D*, locality 21; *E*, locality 23; *F*, locality 24 (identity doubtful); *G*, *A. robusta*, L. Gnotuk, Vic.; *H*, *A. ? rectangularis*, paratype, Centre Lake, Vic.; *I*, *Mytilocypris tasmanica*, Calverts Lagoon, Tas.; *J*, *M. minuta*, paratype, Barkers Swamp, Rottnest I., W.A.; *K*, *M. praenuncia*, L. Corangamite, Vic. All are Recent species.

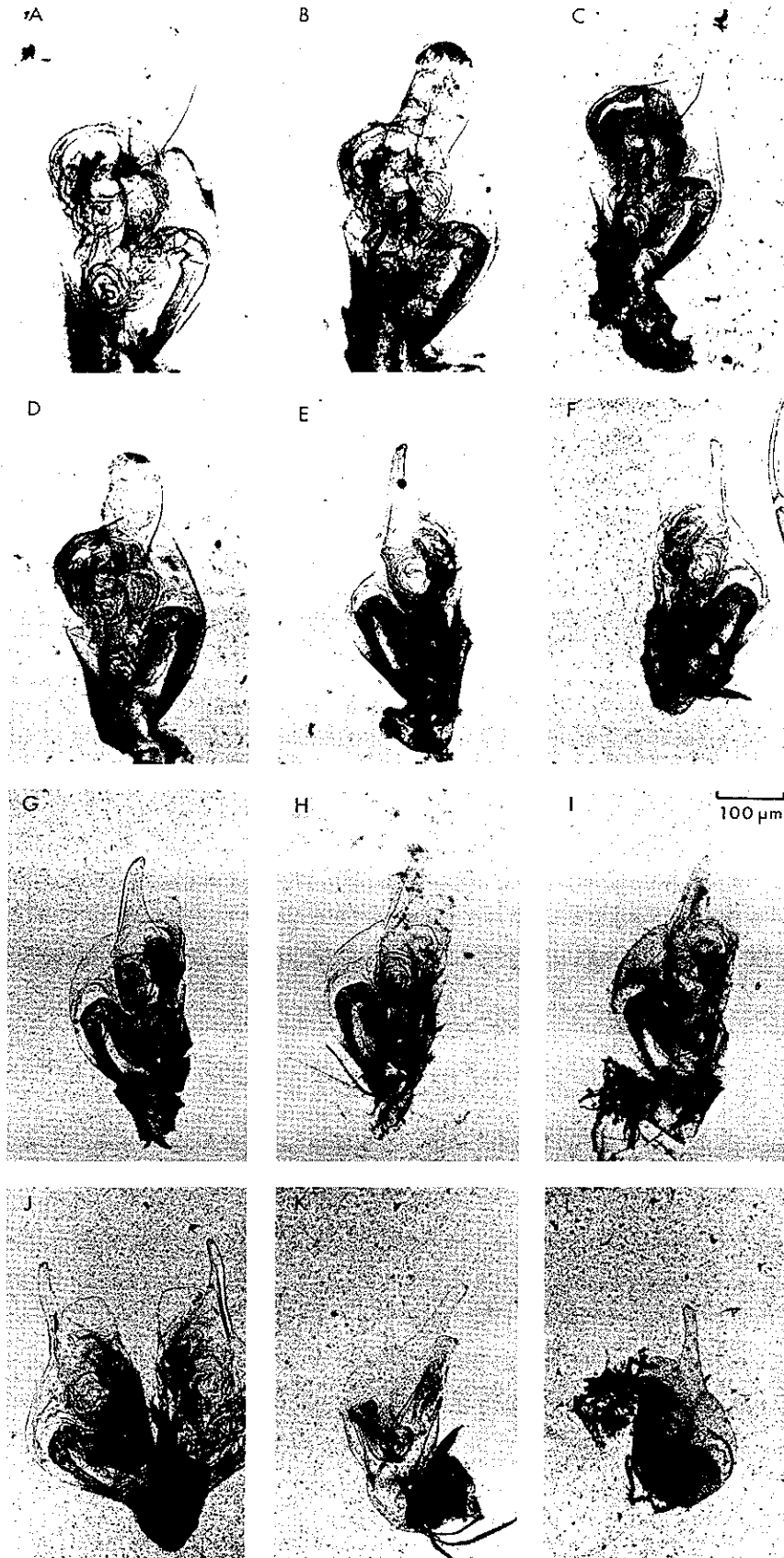


Fig. 29. Hemipenes of *Mytilocypris* spp., by transmitted light: *A-D*, *M. splendida*: *A*, L. Linlithgow, Vic.; *B*, L. Gnarpurt, Vic.; *C*, L. Bolac, Vic.; *D*, L. Colac, Vic.; *E, F*, *M. mytiloides*: *E*, Blackmans Lagoon, Tas.; *F*, creek off Logans Lagoon, Flinders I.; *G-J*, *M. henricae*: *G*, L. Purdigulac, Vic.; *H*, pond 1.5 km SE. of White Lake, Vic.; *I*, L. Linlithgow, Vic.; *J*, NE. coastal lagoon, Flinders I.; *K, L*, *M. ambigua*, paratypes, Barkers Swamp, Rottnest I., W.A. All are Recent species.

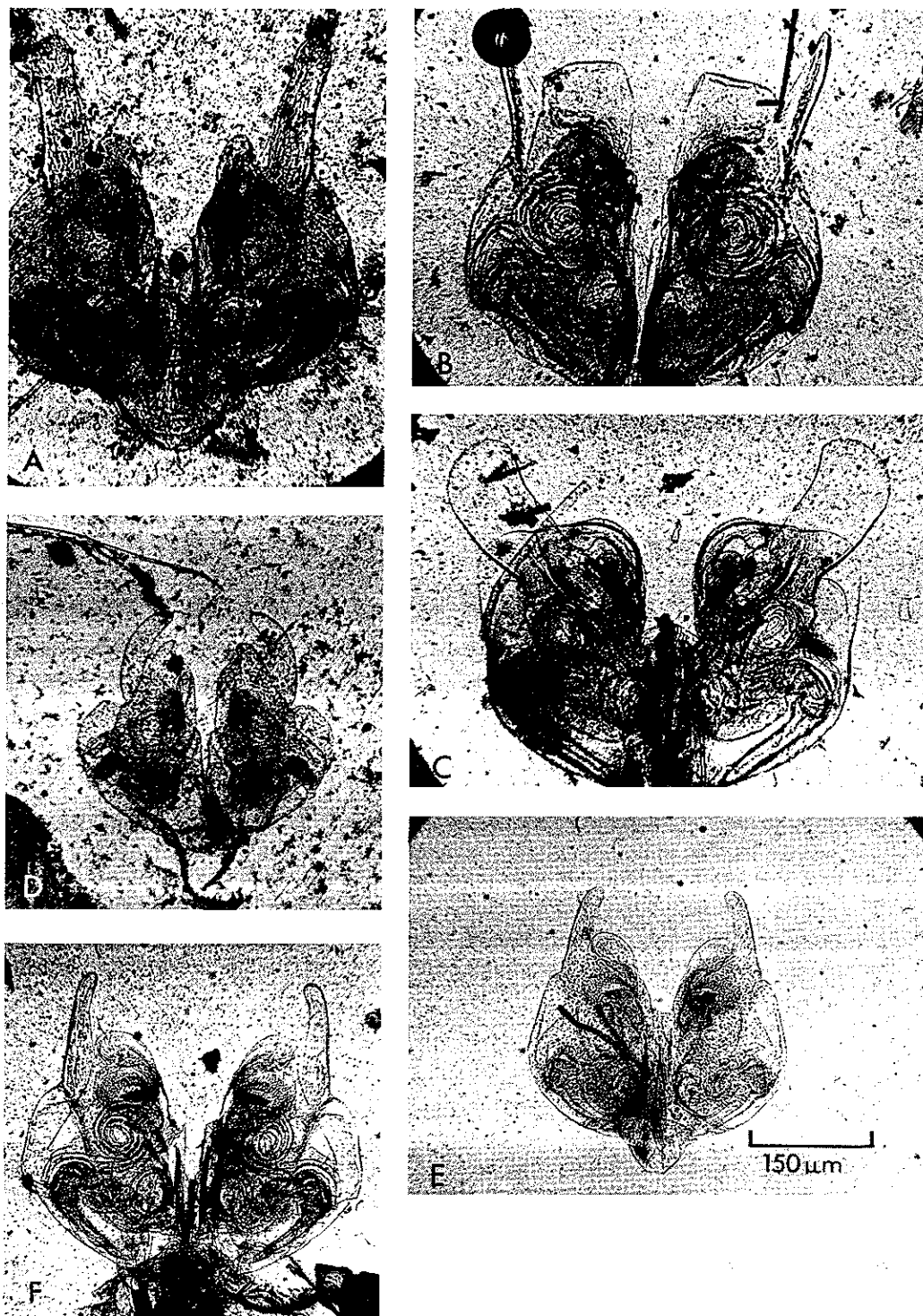


Fig. 30. Hemipenes of mytilocyprinid spp., by transmitted light: *A*, *Australocypris robusta*, Tunbridge Salt Works, Tas.; *B*, *Mytilocypris mytiloides*, L. Edward, S.A.; *C*, *M. splendida*, Tunbridge Salt Works, Tas.; *D*, *Trigonocypris timmsi*, Pine Tree Lagoon, via Hughenden, Qld; *E*, *F*, *T. globulosa*, paratypes: *E*, L. Buchanan, Qld; *F*, Tunbridge Salt Works, Tas. All are Recent species.



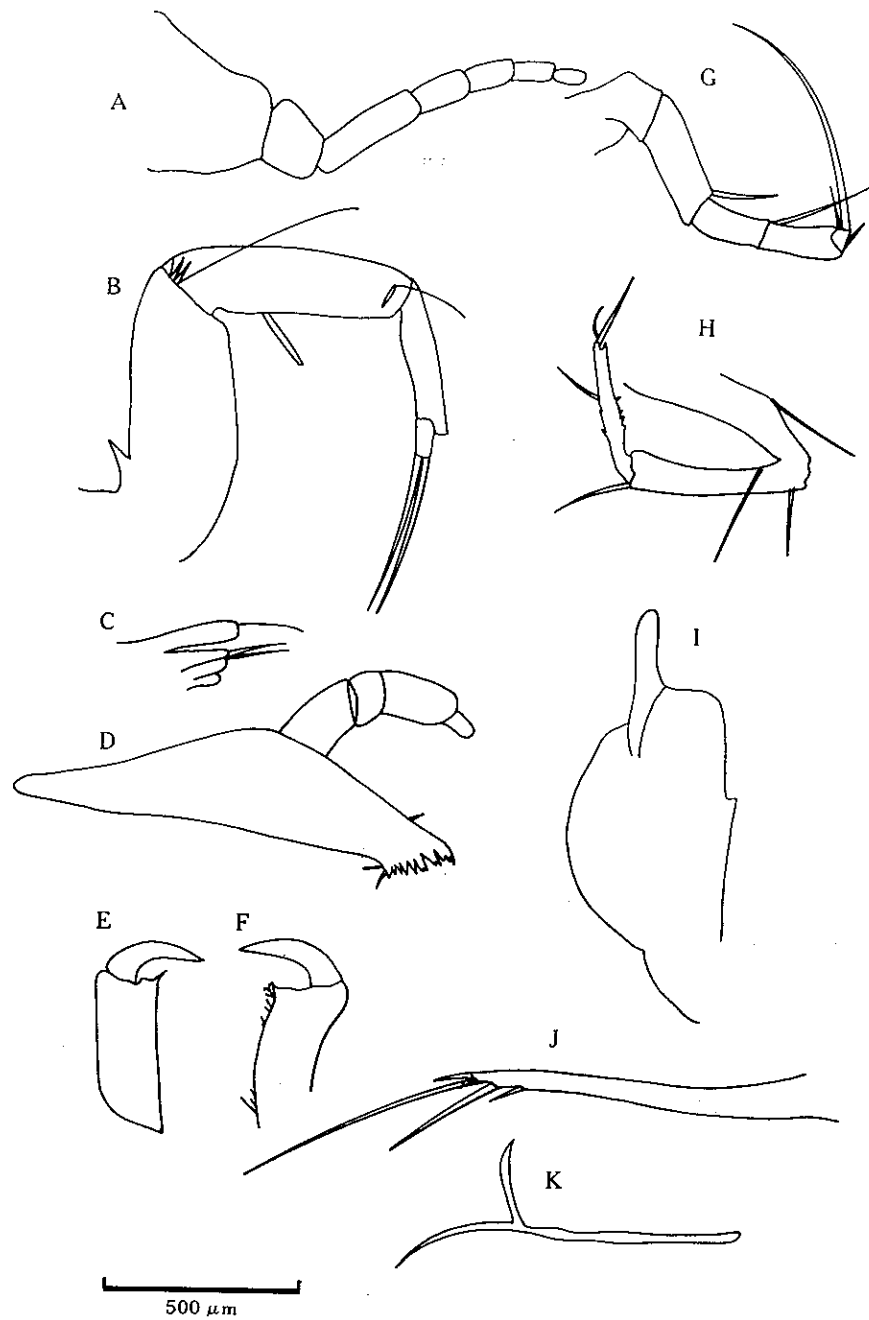


Fig. 31. *Mytilocypris minuta*, Barkers Swamp, Rottnest I., W.A.: A, first antenna; B, second antenna; C, maxilla without exopodite plate; D, mandible; E, F, left and right prehensile palps of first leg; G, second leg; H, third leg; I, hemipenis; J, furca; K, furcal attachment. A–D, G, J, K, female holotype; E, F, I, male paratype; H, female paratype.

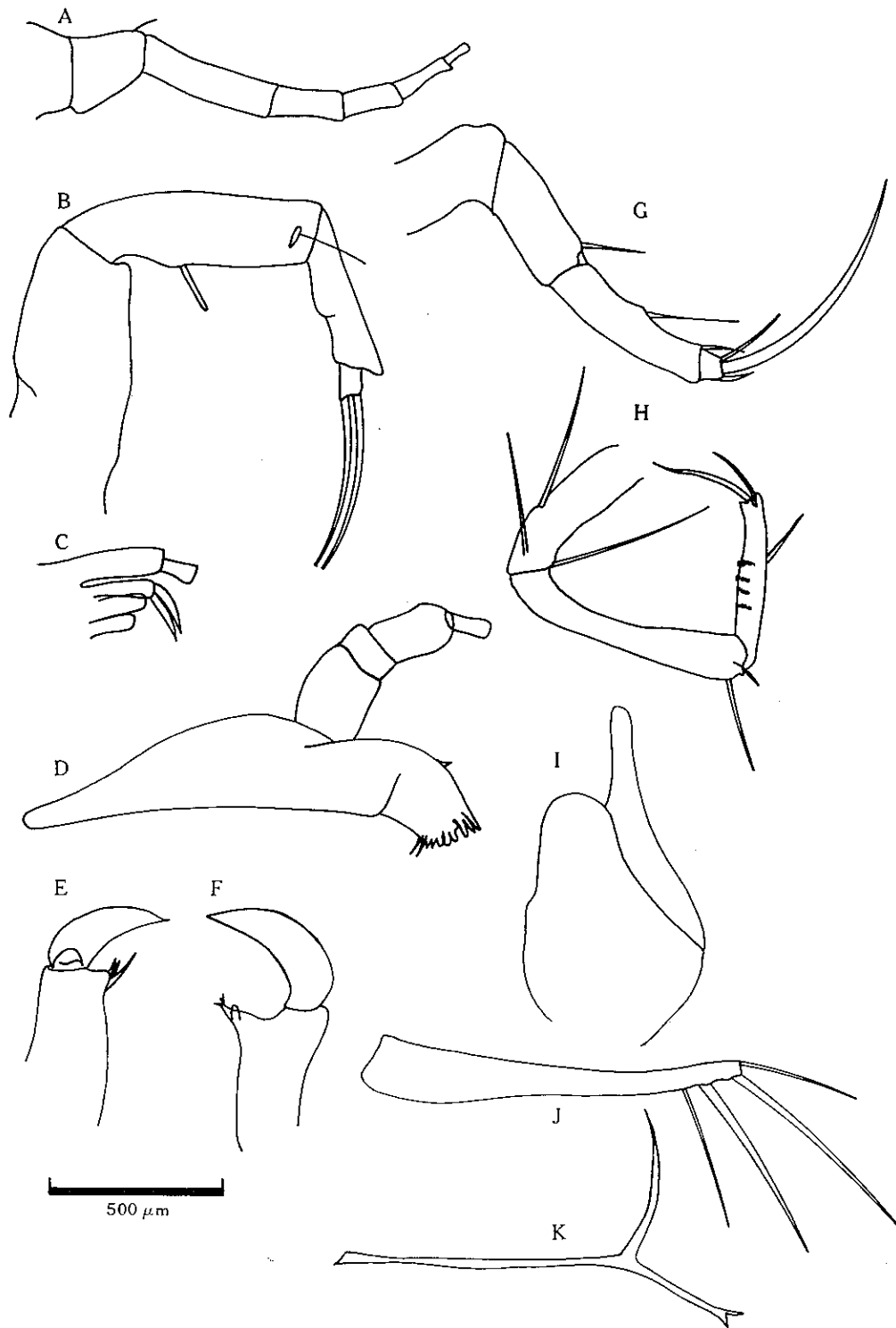


Fig. 32. *Mytilocypris ambiguosa*, Barkers Swamp, Rottnest I., W.A.: *A*, first antenna; *B*, second antenna; *C*, maxilla without exopodite plate; *D*, mandible; *E*, *F*, left and right prehensile palps of first leg; *G*, second leg; *H*, third leg; *I*, hemipenis; *J*, furca; *K*, furcal attachment. *A*–*D*, *G*, *H*, *J*, *K*, female holotype; *E*, *F*, *I*, male paratype.

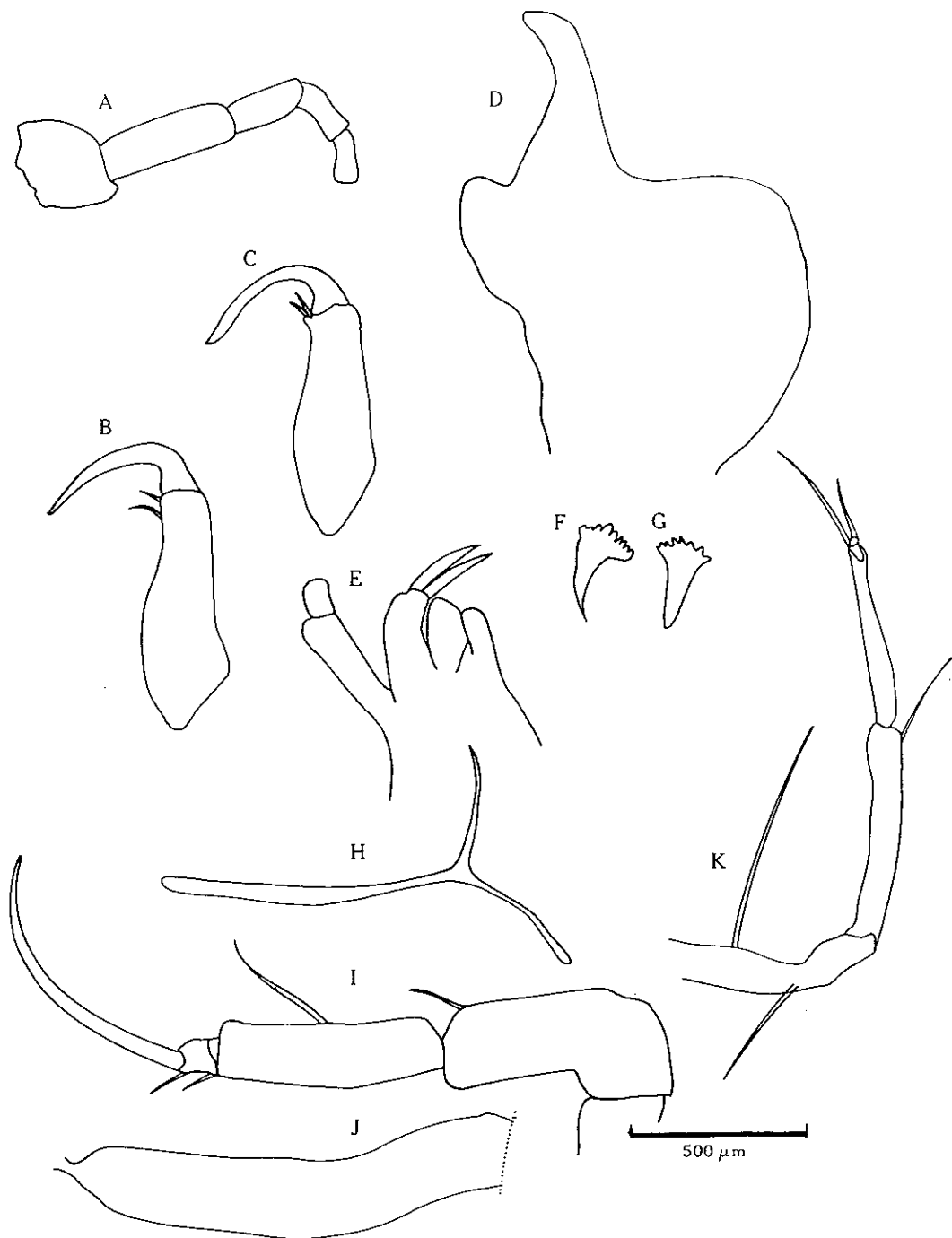


Fig. 33. *Australocypris? rectangularis*, Centre Lake, Vic.: *A*, first antenna; *B*, *C*, left and right prehensile palps of first leg; *D*, hemipenis; *E*, maxilla without exopodite plate; *F*, *G*, left and right rake processes; *H*, furcal attachment; *I*, second leg; *J*, third leg; *K*, ejaculatory tube, broken. *A*, *F*, *H*–*J*, female holotype; *B*–*E*, *G*, *K*, male paratype.

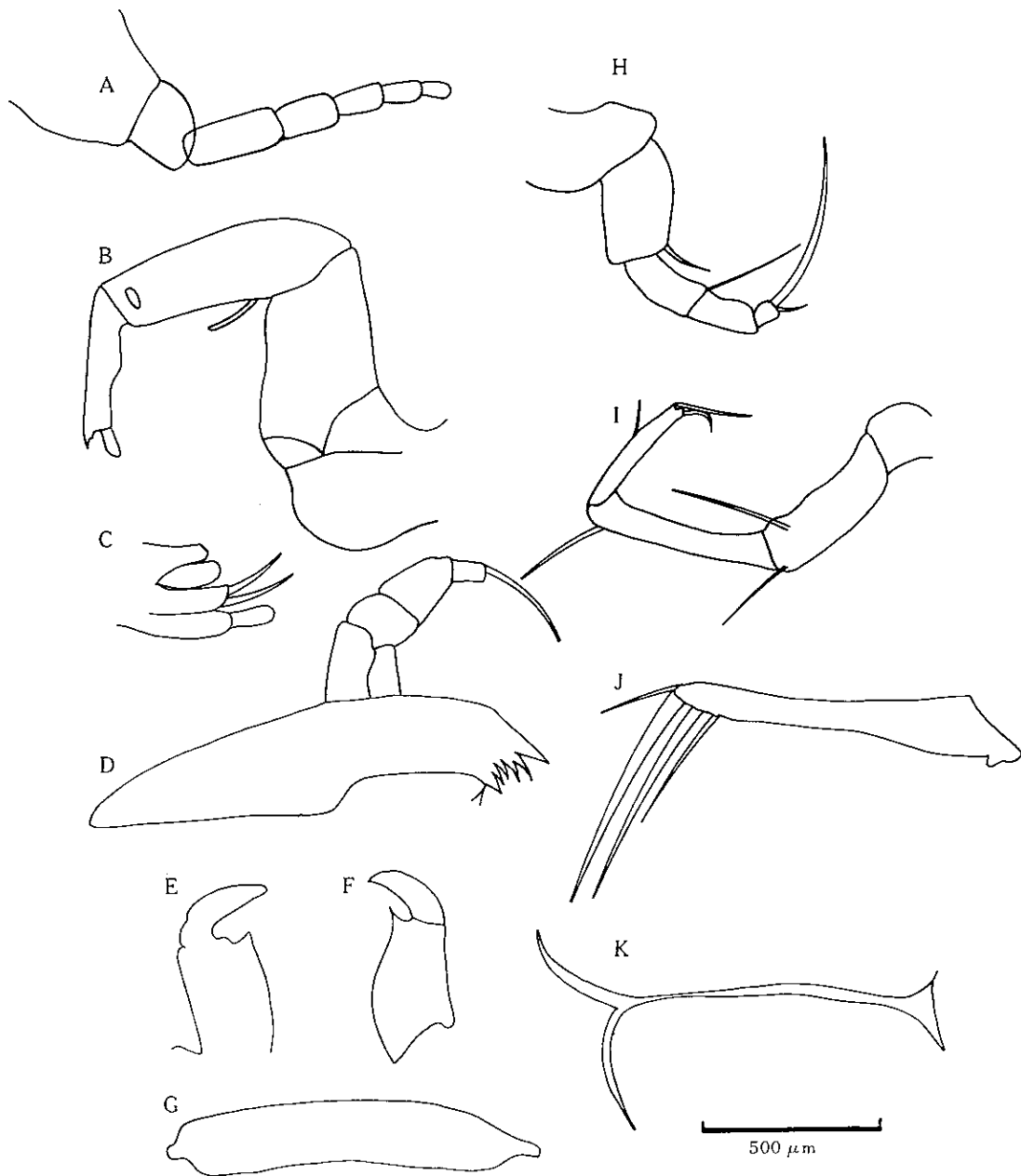


Fig. 34. *Trigonocypris globulosa*, L. Buchanan, Qld: *A*, first antenna; *B*, second antenna; *C*, maxilla without exopodite plate; *D*, mandible; *E*, *F*, left and right prehensile palps of first leg; *G*, ejaculatory tube; *H*, second leg; *I*, third leg; *J*, furca; *K*, furcal attachment. *A–D*, *H–K*, female holotype; *E–G*, male paratype.

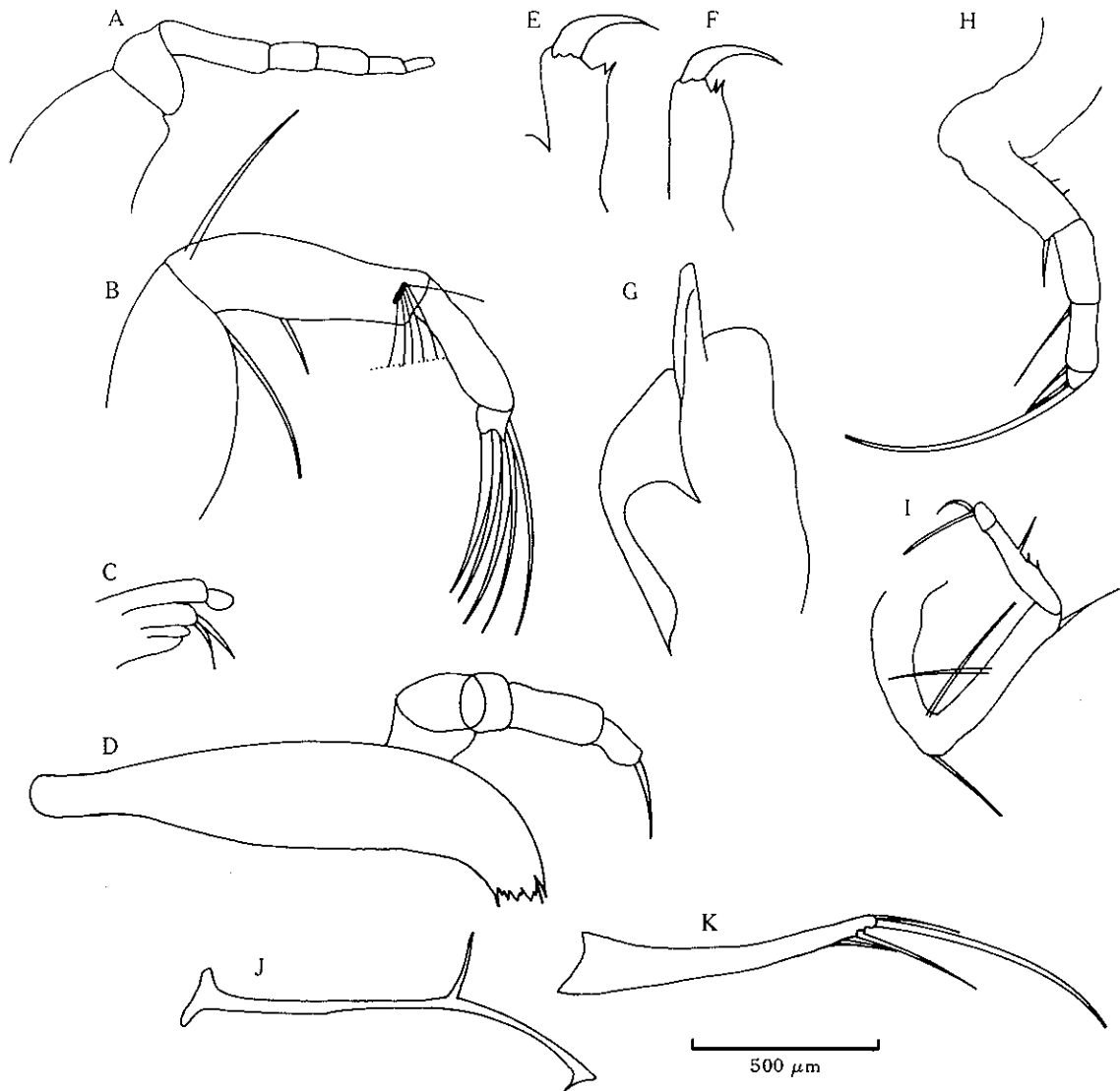


Fig. 35. *Mytilocypris praenuncia*, L. Bookar, Vic.: *A*, first antenna; *B*, second antenna; *C*, maxilla without exopodite plate; *D*, mandible; *E*, *F*, left and right prehensile palps of first leg; *G*, ejaculatory tube; *H*, second leg; *I*, third leg; *J*, furca; *K*, furcal attachment. *A*–*D*, *H*–*K*, female homeotype; *E*–*G*, male homeotype.